

ST. MATTHEW'S

The Anglican Church in the Glebe

Pulse of the Parish

SEPTEMBER 2023

ST. MATTHEW'S WELCOMES MR. ROLAND KUEHN, COORDINATOR OF CHILDREN AND YOUTH MINISTRY

VALERIE NEEDHAM

St. Matthew's is happy to welcome Mr. Roland Kuehn to the position of Coordinator of Children and Youth Ministry. Roland is newly retired from a 35-year teaching career with the Ottawa-Carleton District School Board and brings that experienced background of working with children and youth at the elementary and secondary levels to us.

However, there is more! Since he was a young man, Roland has felt drawn to the study of theology. As well as credentials in teaching, he has almost completed a Master of Divinity degree at Regent College, UBC.

Roland was born in Kitimat, BC, where his father worked for Alcan Aluminum and his mother was a homemaker. He was the eldest of four children. When he was 8, the family moved to Hamilton where his father worked in the steel mills. The family attended a Baptist church, and he received his elementary and secondary education in Hamilton.

After taking a gap year for Biblical studies at Taylor College and Seminary in Edmonton, he returned to Hamilton and McMaster University where he earned a BA in Sociology and Anthropology. This was followed by studies in Criminology at Carleton University.

The nudging of the Holy Spirit was working in Roland's life, and he felt a call to ministry. He was granted a full scholarship to study theology at McMaster University, but decided to obtain teaching credentials instead, with a view to doing mission work overseas.



Darlene and Roland Kuehn

There were no teaching positions available in Ontario when he graduated from Teachers' College and so he secured a position in an inner-city school in California. For the next 5 years, he worked with inner-city youth, providing enriching extra-curricular activities for them, and sometimes making use of his background in criminology to manage challenging situations.

Roland's next adventure was a stint of teaching Grades 7 to 9 for two years with the Baffin Divisional Board of Education, in Kimmirut, Nunavut, where, in collaboration with the Rector of St. Paul's Anglican Church, he provided Bible Study and youth group leadership. The nudge of the Holy Spirit was getting ever stronger, however, so he left the North and began studies towards a Master of Divinity degree at Regent College, affiliated with UBC in Vancouver.

But before he was able to complete these studies, love intervened! He met and married Darlene in 2005 and chose to return to a teaching career to provide economic security for the family.

During his career with the OCDSB, Roland created board-wide science assessments, wrote curricula for a transformative Kindergarten to Grade 8 character-building education program, coached sports, facilitated global citizenship film festivals and social justice assemblies, supervised

(Continued on page 15)

TABLE OF CONTENTS

- 1 and 14. St. Matthew's Welcomes Mr. Roland Kuehn,
Coordinator of Children and Youth Ministry ...
Valerie Needham
2. Scarf and Jewelry Sale ... *Virginia Lindsay*
3. Our Call to Hospitality ...
The Reverend Geoffrey Chapman
4. Invitation to Participate in Green Building Audit ...
Bill Nuttle
5. Wardens' Words ... *Jim Lynes*
6. St. Matthew's Online Treasure Auction,
November 9 to 19 ... *Peggy Nankivell*
7. Big Things, Small Things - Ecologically! ... *Ian Guthrie*
8. Sancho Wins ... *Valerie Needham*
9. Fundraising Fun in Our Community ... *Elizabeth Kent*
10. Unplanned Projects Complicate Building Agenda ...
Bill Nuttle
- 11, 12 and 13. Back to School and Hockey – September
2023 – Finance and Stewardship ...
Paul Wefers Bettink



14. Did You Know ... *Janice Sonnen*
15. Our Eco-Cat Jessie ... *Neville and Peggy Nankivell*
15. Gardens and Grounds at St. Matthew's:
Muted Fall Splendour ... *Mary Glen*

Photography Credits:

Roland Kuehn, Peggy Nankivell, Bill Nuttle, John Coleman,
Sancho Angulo, Elizabeth Kent, Marianne Bournes, John
Lindsay, Kathi Racine, Gordon Metcalfe, Mary Glen

Scarf and Jewelry Sale Virginia Lindsay

St. Matthew's annual Scarf and Jewelry sale will be held on Sunday, December 3. Donations of scarves, jewelry, watches, men's ties, purses, gloves, hats and other small accessories are welcome and can be put into a box located outside the parish office. There will also be a table of unusual and special Christmas-themed items.

Valuable articles can be given directly to:
Margaret Terrett mterrett@sympatico.ca or
Virginia Lindsay vlindsay505@gmail.com.

This widely anticipated event is an opportunity to find unique Christmas gifts and is open to the public.

Please invite your friends and neighbours to contribute and to attend!



OUR CALL TO HOSPITALITY

THE REVEREND GEOFFREY CHAPMAN

On Sunday, September 10th, I preached from Matthew 18:15-20, and spoke about the deeply engrained ethic of hospitality which is woven into the fabric of Holy Scripture. All writers in the Bible assumed that as human beings, there was a minimum standard of hospitality that transcended ethical discourse.

We might describe this as *dogma*: dogma is something so established and true that we need not discuss or debate its merits. For us today, there are many dogmatic assumptions. Domestic violence is always bad, for example. We do not need to have a discussion over when and where domestic violence is appropriate, it is simply a dogmatic norm that it is not ever appropriate.

And we adhere to this value as a broad society, not just as a church community. We have many dogmatic beliefs as a culture and society we take for granted, and they differ from place to place, and have changed and evolved over time.

In the first century, it was a deeply-held value that you were to be radically hospitable. If a lone traveller entered your community at the end of the day, having need of food and drink and somewhere to stay, there was a fundamental obligation to ensure they were cared for, and this norm transcended the need for discussion and debate. It was simply what people did.

And their standards were different from ours today. Most of us do not welcome travelling strangers into our homes, to sleep in a communal living space with our families. But this was a common occurrence in the first century, so common as to be unremarkable. It was a dogmatic social norm.

It is so important to highlight this cultural norm because although it pervades scripture, it is largely unspoken. But being aware of this core value helps us to hear the teaching to “love your neighbour” in a different way. We are already inviting our neighbours into our homes, now we must *love* them too?!

Jesus is upping the stakes in an already deeply hospitable world and inviting his disciples to an even deeper care for others. And he goes on to declare that loving

your neighbour and loving God is the fulfilment of the law. It transcends and fulfills all the other commandments.

While I am often tempted to draw upon the Apostle Paul’s language of faith, hope, and love as the cornerstone of Christian ethics, it is really the love of neighbour that is the centerpiece of our discipleship as Christians, and we need to remember how profoundly hospitable we are called to be.

And so, as the ethicists say, “how then shall we live?”, I invite you to think deeply about the divine purpose of our faith community, and our lives as disciples of Christ. We are coming to a crossroads in our parish life, where we will be exploring questions of stewardship, and we will all be asked by parish leadership to explore our allocation of time, talent and treasure, and how we are addressing the needs of our day.

Just as the friends and families of Jesus welcomed strangers into their homes, we welcome strangers into our lives, and into our spiritual home. How can we utilize our lives, our beautiful space, our gorgeous musical tradition, and our vibrant community to better love our neighbours? What might we need to change, and what must we keep? What is essential to our lives and faith, and what is not? We love these questions when directed at others, but the gospel is directing these questions at us!

There will be joy in this. Welcoming someone into our home means sharing a space we love. Feeding others involves offering food that delights. There is joy in hospitality. As we care for others, we encounter the Holy One.

But I must reiterate; while we find joy in serving God, at the heart of the prophetic tradition and the ministry of Jesus Christ is an unapologetic call to love God and to love our neighbours, *beyond all other callings and vocations*. It is up to us to respond to this call, and I look forward to seeing and hearing how we will respond.

Yours in Christ,

Geoff+

INVITATION TO PARTICIPATE IN GREEN BUILDING AUDIT

BILL NUTTLE

This month, the Creation Matters team is focusing on the St. Matthew's building as part of its work to obtain Green Church certification. The certification program, managed by Greening Sacred Spaces, covers the full range of community activities with greening milestones identified for worship and spirituality, building maintenance, energy use, kitchen, environmental justice, and reconciliation.

We are seeking certification at the Light Green level, the first level in the program. The program specifies four milestones required for each level. Eight additional milestones are chosen from a list provided by the program. This allows churches the flexibility to tailor their program to best meet their needs.

What will it mean for St. Matthew's to pursue green church certification? The Greening Sacred Spaces program is designed to motivate, recognize, and celebrate actions taken to improve our stewardship of the environment. As Anglicans, this is something that we are already committed to do, but it is not always at the forefront of our minds.

Participation in the certification program will help us be more mindful of this commitment and to strive to do better. As well, it will lead us to recognize what we are doing and celebrate our accomplishments.

An energy audit of the building is one of the required milestones. The Light Green level requires only a self-

guided audit using a template provided by Greening Sacred Spaces. The audit will gather information on electricity, natural gas, and water consumption, weather tightness of the building envelope, landscaping and gardens, and how energy is used within the building. Energy use looks in detail at heating and ventilation, office equipment, the kitchen and the coffee station.

The self-guided audit will organize information that we have already, and may uncover areas where relatively simple actions can reduce the building's environmental footprint.

St. Matthew's had a professional energy audit done about ten years ago, and we commissioned an engineer to conduct a detailed assessment of the building condition in 2018. These results are still current because the building and how we use it has not changed. The audit will gather information from these and other sources into a report that is easy to understand.

As part of the audit, the Creation Matters team will be conducting a walk-through inspection of the building in the latter half of September. If you would like to participate in this activity or if you want to know more about the Creation Matters team and the Green Church Certification program, please get in touch with Bill Nuttle at wknuttle@gmail.com.



WARDENS' WORDS

JIM LYNES

Welcome back. It's a familiar refrain in September. Welcome back to school, back to work, back from summer holidays, back to church. While things do slow down in the summer, St. Matthew's was here all along with services that were as memorable as the best services during the rest of the year.

Archbishop Barry Curtis's series of sermons on what it means to be a Christian in the 21st Century were profoundly moving. Our Director of Music, Dr. Robert Hall, kept the music going throughout the summer - even without the choir - and turned in two memorable performances: a piano/flute duet of a jazzy version of *Be Thou My Vision* that made me want to jump to my feet and applaud (but being at an Anglican service I decided to remain in my pew and discretely and silently tap my hands together); as well as serving in the role of cantor for the Labour Day weekend service at which he sang a solo before the Gospel reading that revealed his powerful and professional baritone voice.

Now that it's Autumn, things that had stopped for the summer are back: the choir, Sunday School, meditation groups, Bible study and special events. With this wide range of program offerings, we hope that you will be back on Sundays and for whatever other programs that interest you, and that you will also bring your financial offerings.

Our financials always take a hit during the summer and we are feeling pressure on our bank balances. We will be seeking Diocesan approval to withdraw some of our investments from the Consolidated Trust Fund in order to cover some of the capital expenditures that we have incurred this past spring and summer.

Inflation has caused some of our expenditures to increase significantly (notably snow clearing, utilities and insurance) and we are relying on increased donations to help cover those items.

As part of the wider picture in charting a way forward for the parish, Corporation is planning a meeting of Parish Council after the 10:30 service on September 24th. This first meeting will look at some of the demands and opportunities we are facing and start to consider how best to respond to both.

A second meeting before Advent will try to come to a consensus on next steps. Parish Council meetings are open to any interested parishioner, but if you can't attend, we'll provide information on the results in the bulletin and online.

Jim Lynes
Rector's Warden



On Sunday, August 13th, the Choir, under the direction of Dr. Hall, sang Evensong at Holy Trinity Church in the Parish of Chelsea-Lascelles-Wakefield, with Canon Kevin Flynn presiding.

ST. MATTHEW'S ONLINE TREASURES AUCTION

NOVEMBER 9 TO 19

PEGGY NANKIVELL

Cataloguing has begun for the 2023 online auction and the auction site will open for bidding on Thursday, November 9, and run until Sunday, November 19.

Our major auction sponsors are supporting us again this year: McKeen Metro Glebe, Capital Home Hardware in the Glebe and Amica The Glebe. These sponsorships will cover many of the costs involved in staging the auction such as the website, graphic design and promotion. We have also received extremely important assistance from Davidson's Jewellers.

Once again, Ottawa artist Donna Lynd has contributed a painting that will be used for our posters and website. We have already listed art by artists such as Canadian war artist Robert Hyndman, Jill Alexander, Colette Samson, Mitch Kierstadt, Denise Soper, and First Nations artist Clemence Wescoupe.

This year we will feature several fine carpets from the middle east and Mediterranean countries and exotic carvings from many other lands. We also have collectible books and indigenous arts and pottery by significant creators such as Martha Sturdy.

Look for fashion items such as designer purses and jewelry – there are many beautiful pearls. As usual we will have some unusual antique silver, crystal, art glass and fine furniture. And for collectors, some rather neat die-cast model cars.

Just as we did last year, we will offer certificates for accommodation at resorts in Antigua, Bermuda and Panama. Christmas baked goods and meals are hot ticket items! If you would like to contribute food items, please contact Peggy Nankivell at nankivell@rogers.com.

A portion of the proceeds from this year's auction will support the restoration of St. Matthew's stained-glass windows while some will go towards Outreach.

Online store registrants are automatically registered for the auction and registration for new bidders starts in October. The catalogue will be up for preliminary viewing on November 1.



*Greek Tapestry Weave
Rug*



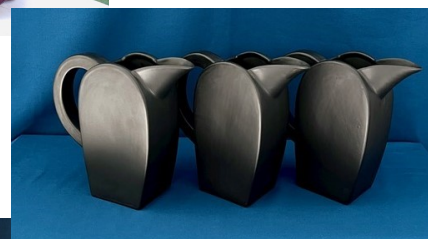
*Zofia Bobrowska Oil on
Board of Red Roofs*



Jill Alexander "Farmhouse Memories"



*Vintage Coach
Leather Handbag*



*Above:
Three Contemporary Slate
Gray Ceramic (Resin) Pitchers
by Martha Sturdy*



Left: Zimbabwean Tea Set

BIG THINGS, SMALL THINGS - ECOLOGICALLY!

IAN GUTHRIE

Ah, those lazy crazy days of summer, remember them? Those days when the mind could wander, relax and be at peace with the world? When thoughts (ecologically-speaking) of what we have done and what we have left undone did not trouble us? When we did not need to ask the question, have I made God's creation a better place?

When I reflect upon things done, I have felt twinges of guilt about flying across the Atlantic in a metal tube with 299 others. The consumption of fossil fuel for air travel is not good for the environment. What do we do about world leaders flying to global gatherings when, one wonders, could they not accomplish their work via Zoom? And let's not forget the fossil fuel footprint of the COP (UN Conference of the Parties) Conferences.

And then I reflect on an intimate part of my life, my electric toothbrush. I have had one for about thirty years, and am very attached to it. Even though it does a very good job, superior to what was achieved when I scrubbed away at the molars, I am certain that it consumes more than a trivial amount of electricity.

During the summer I took it upon myself to inquire about the use of electricity for toothbrushes and every single person I asked owns an electric toothbrush. (Perhaps, you will say, I encounter an unrepresentative demographic). I could guess that there are twenty million elec-

tric toothbrushes, at least, in this fair land of ours. The conclusion appears to be that if millions of us use a little electricity for this purpose, together, we will all use a lot.

It's the electricity consumed by brush users, (probably generated by fossil fuel, and the less said about nuclear-originated power the better), that is bothersome.

We, individually and collectively, are increasingly sensitised to the threat that the generation of electric power poses to our environment and even the continuity of life on our planet. At St. Matthew's we are considering Green Church Certification (please see Bill Nuttle's article on page 4), our collective contribution to wise stewardship of the planet.

However, as individuals, should we stop jetting around the world, and should we also be telling ourselves to stop using even our electric toothbrushes, because they use electricity? Big things, little things?

Now, on a very hot September day, I will retire to my afternoon beer, about which I feel some discomfort because I know it consumes a considerable amount of energy to grow the ingredients, process them and distribute the product. But I do enjoy my beer.

Hard choices to make once one becomes sensitized to the environmental implications of those choices.

*And so our Good Lord answered to all the questions and doubts
Which I could raise, saying most comfortingly:
I may make all things well,
I—and I can make all things well,—and I
shall make all things well.
—And you shall see for yourself
that every kind of thing will be well—
—And in these words God wishes us to be
Enclosed in Rest and in Peace—*

*Julian of Norwich
England (1342-1419)*



SANCHO WINS ...

VALERIE NEEDHAM

Sancho Angulo, formerly a Deputy Warden at St. Matthew's, was scrolling through the newsfeed on his phone one day when he noticed a cast call for a new contest on CTV to be hosted by Lilly Singh entitled "Battle of the Generations". The show features four contestants from different generations – Baby Boomer (1945-69), Gen X (1956-79), Millennial (1980 – 96), and Gen Z (1997-2012), as they face-off through multiple rounds of pop culture trivia.

Cash prizes are awarded for correct answers and contestants are eliminated if they are not able to respond accurately. At the end, the overall winner for the evening has one last question in which they can bet all their winnings for a grand prize of \$25,000, or lose it all if they are wrong.

Now, Lilly Singh had long been a vocalist that Sancho appreciated, and he has also long been an aficionado of trivia and facts. This combination was irresistible, and so he filmed a video and completed an application to introduce himself to the producers, telling them about himself and what drew him to this contest. To his amazement and delight, he received a call last November telling him that he had been cast for a segment of the show to be filmed in February 2023.

Three months to prepare. And so, our Sancho embarked on a disciplined regimen of watching TV shows (Mash, Loveboat, Gilligan's Island) and movies (The Graduate, Grease, The Shining) from each generation. In addition, while working out at the gym, he listened to music from the 40s to the present.

Another major source of helpful information was a YouTube series entitled "Timeline", which outlines major events in politics and pop culture in each year.

The journey to Toronto to tape the program was akin to the Hero's Journey. Braving the bitter cold on a February afternoon, Sancho boarded a flight, only to be held on the ground for 5 hours because flights were backed up at Pearson International Airport.

That flight was eventually cancelled, so Sancho booked a 5.30 am train to Toronto the next day, arriving at the Ottawa station in the pre-dawn darkness and -45 degrees C with the wind chill. So cold it was, that, in Smiths Falls,



the crew had to chip ice off a frozen switch before the train could proceed. Despite these challenges, our intrepid hero arrived at the studio with 15 minutes to spare.

Sancho acquitted himself brilliantly in the contest, arriving at the end with winnings of \$15,000 and the choice between leaving with his gains or betting it all for \$25,000. The category was 'women American actors'. Musing aloud "Hmmm .. I'm not good on women American actors", he chose to keep the \$15,000. Just as well. He tried the question and was incorrect and so would have lost all his winnings.

And how will he spend these funds? Well, he has a couple of trips planned, including a visit to his grandmother in the Philippines this fall, and has paid down against his mortgage.

Way to go, Sancho!



FUNDRAISING FUN IN OUR COMMUNITY

ELIZABETH KENT

Those who are poorer off, just like those who are better off, need three meals a day, and maybe occasional snacks. Rising inflationary costs for food and rent on very limited incomes mean less food of any kind at any time of day!

The greater central Ottawa area [Centretown, the Glebe, Old Ottawa South and Old Ottawa East] has been served for many years by a local Emergency Food Centre in the basement of Centretown United Church. It was started in response to community need in 1978 by the Centretown Churches Social Action Committee, an ecumenical group of 22 downtown churches.

This year the Food Centre moved to more accessible quarters at 370 Catherine St. It is now called the Centretown Community Food Centre. But with demand growing as prices rise, the need to provide good healthy food for our neighbours remains a continual challenge.

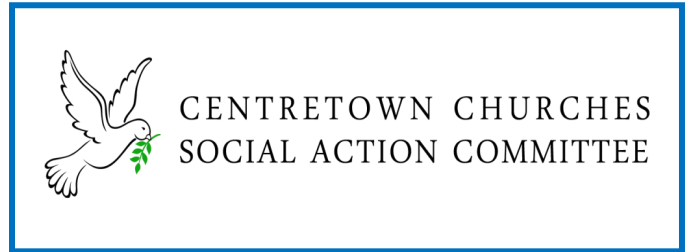
Our 8th Annual Walk for the Centre is to be held on October 1, 2023 from 1:30 – 4:00 pm, bringing people together

for hungry neighbours who need an extra 3 – 4 days of food to make it to the end of the month.

This year's walk is along the beautiful Rideau Canal. Please arrive early around 1:00 pm to register and make your donation in Jean Pigott Place, City Hall. Early birds will have some entertainment to enjoy, a Barbershop Quartet, as they wait for the Sons of Scotland Piper band to launch our walk.

After a short opening ceremony the Pipers will lead us from City Hall across Laurier St. into Confederation Park for impromptu music and a pleasant fall walk. Photos of your walk are definitely encouraged as we have prizes for best picture of nature, walkers, groups of walkers, teams and your friendly pets. We encourage registering and donating online, and for more information go to www.centretownchurches.org/walkathon.

Come with friends and colleagues, members of a church or office, walk in the fall sunshine with your pets – make a new team! Celebrate solidarity with us in fundraising fun!



WALK FOR THE CENTRE
Supporting Centretown Community Food Centre

Sunday October 1, 2023
1:30 - 4:00 pm

2 OR 4 KM WALK Scenic pathway meeting and ending at Ottawa City Hall

Prizes for photos

Centretown Community Food Centre is a project of the Centretown Churches Social Action Committee.

Online donations and full details
www.centretownchurches.org/walkathon





Michael Zappavigna (flute) and Dr. Hall



Siri Ducharme-LeBlanc (violin) and Dr. Hall



On Sunday, June 18th, the day before Archbishop Barry's 90th birthday, we celebrated him with best wishes and a birthday cake.



The Reverend Geoff Chapman presenting the gift of a book, "The Orthodox Heretic" by Peter Rollins, to The Most Reverend Barry Curtis on the occasion of his 90th birthday, June 18, 2023

UNPLANNED PROJECTS COMPLICATE BUILDING AGENDA

BILL NUTTLE

The installation of a new door at the First Avenue entrance just after Labor Day capped a busy year of repairs and restoration projects around the St. Matthews building. Several unplanned, emergency repairs complicated completion of the building agenda presented at Vestry.

Ongoing work to assess problems with water infiltration in the basement promises another full agenda of capital projects to be carried out in 2023.

We began the year with plans for several repair projects that required special funding above and beyond regular building operation budget. These included the repair to the second boiler, restoration of the *Gethsemane* stained glass window, replacement of the fence in the parking lot, and the replacement of the First Avenue door.

As well, we engaged with RMA+SH architects for an initial assessment of the foundation related to long-standing problems with flooding in the basement. These projects have been completed, and if the new door looks just the same as the one it replaced, that's what we intended.

Work was complicated by emergency repairs that were not included in the budget. The heating system required additional work to rebuild a heat exchanger and a pump that feeds heat to the basement. And, urgent repairs to a drainpipe in the basement were needed to keep the first floor washroom operational.



The team from Heritage Carpentry installs the new First Avenue door

In addition, Telus has restarted plans to install a cellular antenna in the belfry, and this project involves costs to St. Matthew's for our architect to review and approve the detailed plans.

The assessment of the foundation produced good results, but it leaves us with a lengthy list of "next steps" to be completed in 2024. Overall, the foundation was found to be structurally sound, with the caveat that additional investigation is required in two specific areas in the crypt and in the storage locker in the northeast corner of the basement. The next stage of work on the water problem in the basement will involve even more work in terms of the cost and number of activities for the Property Committee in 2024.



*The Parish Picnic
June 11, 2023*



BACK TO SCHOOL AND HOCKEY – SEPTEMBER 2023

– FINANCE AND STEWARDSHIP

PAUL WEFERS BETTINK

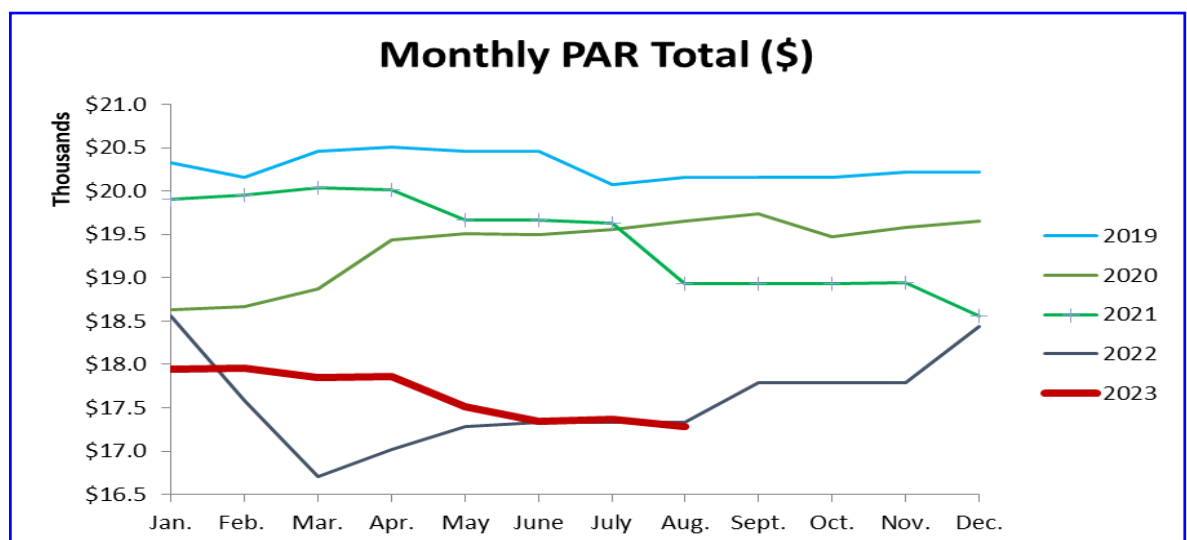
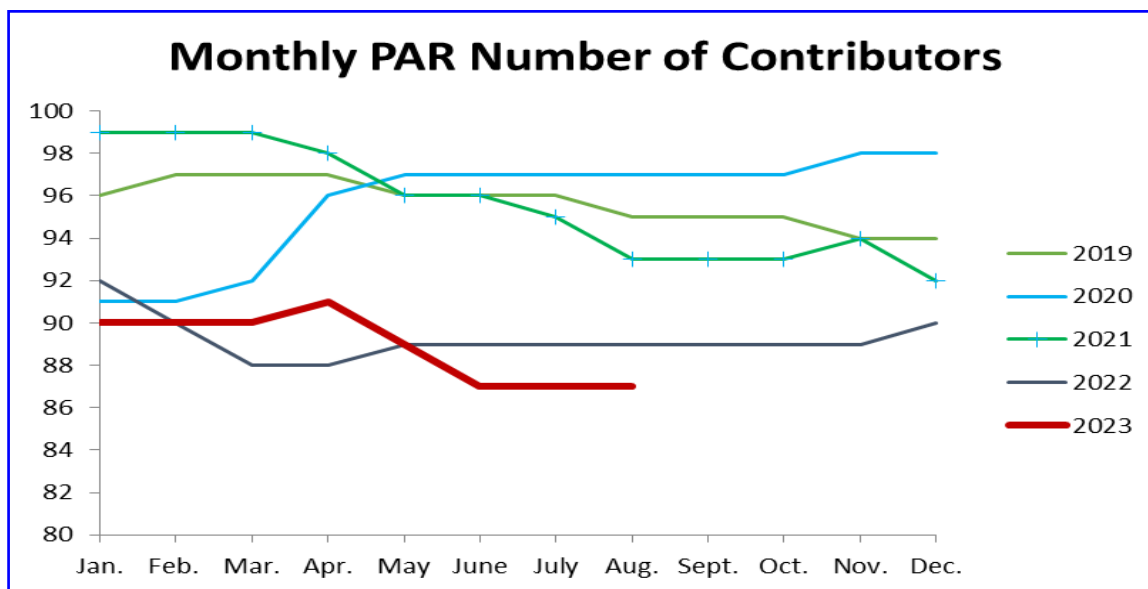
While January 1st is officially the beginning of the year, for many individuals and families the day after Labour Day is really the new year, with the start of a new school year. Our church also goes through this type of anticipation and revival in the month of September, with the return of our regular choir and Sunday School services.

Unfortunately, during the summer months, our revenues normally take a decline, and with September, there are concerns about whether we will meet our budget goals. This article will look at these concerns, by examining:

1. The current PAR (pre-authorized remittances = automatic monthly donations) numbers and,
2. The overall year to date revenue and expense situation.

PAR Contributors and Amount Comparisons

While our PAR 'statistics' at the beginning of the year were appearing to be on the upswing, there is a reduction in the number of PAR participants (Figure 1). However, the monthly contribution amounts via PAR are the same as last year at this time (Figure 2).



Year to Date (January to August)**Revenues and Expenses**

Below is a summary table of our year to date (January to August) revenues and expenses with a comparison with the same period last year. While our revenues have

increased compared to last year (\$47.2 thousand and almost 15 percent), our expenses have also increased and at a higher rate and greater amount (\$82.8 thousand and about 22 percent).

	Jan to Aug 23	Jan to Aug 22	\$ Change	% Change
Revenues				
Donations (General Use)	246.72	236.32	10.40	4.4%
Donations (Designated Use)	19.54	13.27	6.27	47.3%
Rental and Other Income	43.40	33.80	9.60	28.4%
Music and Concerts	12.29	1.84	10.46	569.2%
Fundraising	41.43	30.94	10.49	33.9%
Total Revenue	\$363.38	\$316.17	\$47.21	14.9%
Expenses				
Building Maintenance	67.86	59.85	8.02	13.4%
Music and Concerts	11.66	9.50	2.16	22.7%
Fundraising	4.60	0.82	3.78	461.4%
Personnel, Office Expenses and Communications	200.34	213.49	-13.16	-6.2%
Liturgical and Christian Education	6.61	3.82	2.79	73.0%
Outreach	23.61	6.45	17.16	266.1%
Diocesan Fair Share	89.96	89.99	-0.03	0.0%
Capital Expenses	63.00	0.92	62.09	6772.5%
Total Expenses	\$467.64	\$384.84	\$82.81	21.5%
Net Income/Loss	-\$104.26	-\$68.67	-\$35.60	51.8%

The table above is summarized, so it does not go into great detail. But a few explanations of some of the major changes in expenses are:

Outreach: The majority of this additional expense (about \$21,400) is related to the expenses from our sponsorship of Noor Rashid and Omar Al-Rawe, FACES refugee couple from Syria. All the funds related to this sponsorship were from our FACES account, most of which was raised but not spent in previous years.

Capital Expenses: Most of these expenditures were due to the stained-glass window restoration (\$8,000), a building assessment report (\$7,000), the First Avenue door replacement (\$7,000), organ repairs (\$5,000), fence repairs (\$9,700) and the heating /boiler system (\$20,800).

These expenditures total about \$56,000 of the \$63,000 of capital expenses (almost 90 percent).

Most of these expenditures will be covered by transferring funds from the Nave Altar, GIFT and Consolidated Trust Funds, as approved by Vestry in February.

The decisions made at Vestry allowed us to meet the demands that were facing us in 2023. But we cannot continue to make ends meet by drawing down our savings.

Last fall, I wrote about the hockey stick nature of St. Matthew's revenues, in which there is normally an increase in our revenues towards the end of the year (thus the hockey stick shape).

While hockey is our official winter national sport, it is not necessarily the best model for revenue forecasting. Hopefully, there will be another 'hockey stick uptick' in our revenues as we enter the last few months of the year.

(Continued on page 14)

(Continued from page 13)

Conclusion – More Revenue Please

Many people are under financial stress, with concerns about inflation and the overall economy. We have gone through interesting and challenging times during the past years of the pandemic. However, it appears that we are recovering. If you can make additional donations to the church in the coming weeks (e.g., Thanksgiving and Advent campaigns) that would be greatly appreciated.

And, if you could consider making regular monthly contributions through our PAR program that would be very helpful. Perhaps there are alternatives to PAR that are more convenient and flexible. We are open to new ideas and suggestions. In the coming weeks, the church will be

looking at new and convenient ways to make donations to our church. Thank you for your continued support.

On a personal note, I would like to thank Tony Maxwell for his participation on the St. Matthew's Finance Committee for over 30 years, including as Chair. He has provided helpful guidance, encouragement, and leadership for both the Finance Committee and the church. He deserves his 'retirement'. Thank you, Tony.

God bless,

Paul Wefers Bettink, Chair of the Finance Committee

Please see a message from our Stewardship Officer, Janice Sonnen, with information around the variety of ways to contribute to St. Matthew's, on page 15.

ST. MATTHEW'S
The Anglican Church in the Glebe



**Faith, Fun
& Friends**

St. Matthew's invites you to join its Children, Youth & Family Activities

Planned Activities for 2023-24:

- Monthly Family Services & Sunday School
- Youth Choir
- Prep. for Christian holidays of Christmas and Easter

Fun Special Events:

- Spaghetti Dinner & Game Nights
- Escape Room, Maple Taffy, Earth Day and more
- Volunteering – Out of the Cold Supper (for teens)

Develop a sense of community belonging.
Inquire, register or volunteer at admin@stmatthewsottawa.ca or 613-234-4024

stmatthewsottawa.ca
130 Glebe Avenue, Ottawa  

(Continued from page 1)

over 11 student-led Social Justice Clubs which raised over \$40,000 (three of which won student leadership grants from Speak Up Ontario), and coached high school debate clubs which he took to Madrid, Rome, and the Netherlands to participate in Model UN and Harvard Model Congress Debates.

For Roland, teaching is a calling and through his teaching, he has engaged in values-based education that empowers students and reflects the Fruits of the Spirit found in Paul's Letter to the Galatians: love, joy, peace, forbearance, kindness, goodness, faithfulness, gentleness and self-control.

He teaches out of a model of holistic character education, encouraging students to reflect upon what to think, how to think and how to live. This model of education led to the establishment of student-led extra-curricular groups in which Roland encouraged students to identify a project and fund-raise towards it.

As a result, during the last 15 years of Roland's teaching career, students raised over \$40,000 for projects around the world including wells, health clinics and schools for

AIDs orphans in Kenya, mosquito nets in Rwanda, flood relief in Pakistan and the Roger Neilson House here in Ottawa.

In 2012, he won a M.A.D.A. (Make A Difference Award; Commfest Film Festival) for creating a documentary entitled *Unbreakable Spirit*, depicting the work of his students partnering together with the principal of a school for AIDs orphans in rural Kenya.

Throughout his teaching career, Roland has been committed to living his faith through leading by example and empowering students to take the initiative while providing support in the background. Through vigorous conversations in the classroom, over-night field trips, sports, and drama, he has provided an enriched educational experience for his students.

How fortunate we are that Roland will be bringing this fertile background to the children and youth of St. Matthew's!

We welcome you, Roland, and Darlene, and your sons Jacob and Joel and their families when they are able to visit.

Did you know ...

Monthly PAR (pre-authorized remittances), using weekly envelopes and contributing cash are the most cost-effective ways for St. Matthew's to receive your donations. To receive a tax receipt, be sure to provide your address.

To sign up for monthly PAR contributions, please complete the PAR Authorization and Instructions Form (https://www.stmatthewsottawa.ca/images/content-files/PAR_Authorization-and-Instructions-Mar-2020.pdf) and email it to StMattGlebe-PAR@gmail.com.

There are a number of ways to give to St. Matthew's electronically:

- Select the 'Donate' option on St. Matthew's website at <https://www.stmatthewsottawa.ca/> that takes you to the Canada Helps website where we are registered.

- Donate online through St. Matthew's Online Treasures Boutique at [Treasures Boutique](#).
- Parishioners who contribute through the Government of Canada Workplace Charitable Campaign (GCWCC) at <https://www.canada.ca/en/campaign/charitable.html>, can direct their donations to charities of their choice, including St. Matthew's. Use the search engine (type in St. Matthew's Parish -- note NO space after St.) or enter the Business Number: (108084658RR0078) at 217 First Avenue, Ottawa.

St. Matthew's plans to obtain a QR code this fall to simplify making donations AND is looking into other ways to make supporting our parish and its good works easier. We'll be sharing more of this information with you through the fall.

With grateful thanks for your ever faithful support.

Janice Sonnen

OUR ECO-CAT JESSIE

NEVILLE AND PEGGY NANKIVELL

It is with heavy hearts that we let you know our beloved St. Matthew's feline eco-activist Jessie died suddenly in late August from a stroke. She had been our faithful companion for 18 years.

Happily, she achieved her objective of raising funds for St. Matthew's Green Team's initiative to purchase a water treatment system for St. Thomas Anglican Church in Moose Factory, Ontario. The money was raised through the sales of her St. Matthew's eco-cat advice booklet "A Guide for Cats Who Care." Jessie also raised money for St. Matthew's with sales of her publications at earlier auctions.

It was a banner year for Miss Jessie who was interviewed on CBC radio's "What on Earth with Laura Lynch", and was featured in articles in the Anglican diocese's publication Cross Talk, The Glebe Report, and Pulse of the Parish.



Canon Pat Johnston and Jessie

She also successfully applied for an International Standard Book Number (ISBN) and a pdf of her booklet was deposited in the Library and Archives Canada. Downloadable copies of her booklet, dedicated to Auntie Marg (Terrett) and the Green Team, can be obtained at: <https://bac-lac.on.worldcat.org/search?queryString=no:1389417771>

She was blessed several times at St. Matthew's Blessing of the Animals service, including when she was a kitten.

GARDENS AND GROUNDS AT ST. MATTHEW'S: MUTED FALL SPLENDOUR

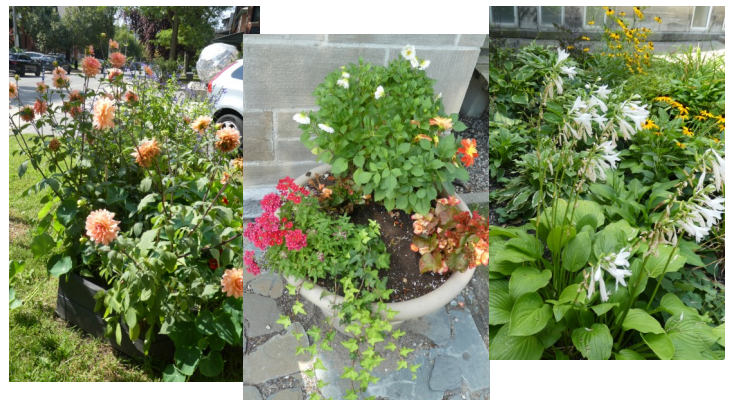
MARY GLEN

There is a wistfulness in the garden as blooms fade and foliage begins to wither. Yet there is much new beauty to appreciate as late season plants come into their own. The Gardens Team is turning its attention to cutting back, cleaning up, clearing space for thriving growth, planning plant thinning and/or division, and considering repositioning or transplanting with "next year" in mind. A gardener's work is never done!

Please enjoy the Fall "look" of the church lawns, trees and gardens and know that your feedback, suggestions and observations are always most welcome.

As Sir Thomas More reminds us, "The soul cannot thrive in the absence of a garden. If you don't want paradise, you are not human; and if you are not human, you don't have a soul."

May your autumn days be blessed and beautiful.



Mary Glen on behalf of the Gardens Team:

Judy Billingsley, Robina Bulleid, Joan Lawrence, Judy Maxwell, Lucianne Poole, Steve Reid and Mary Glen;
And Grounds Team: Robina Bullied, Bob Richards, Ava Hammond and Ian Glen.

ST. MATTHEW'S

The Anglican Church in the Glebe

St. Matthew's is a vibrant Christian community that welcomes everyone, embraces inspiring worship and learning, and is committed to hospitality and loving service.

[Worship Services](#)

Sunday 10:30 a.m.

In-person Choral Eucharist

Streamed on YouTube

Streamed on Facebook

Sunday 8 a.m. and Thursday 10 a.m.

In-person Said Eucharist

Last Sunday of the Month 10:30 a.m.

Family Service

First Sunday of the Month

Evensong

Clergy

IncumbentThe Reverend Geoffrey Chapman
Honorary AssistantsThe Most Reverend Barry Curtis
The Reverend Katherine (Katie) Tait
The Reverend Dana Rodgers

Leadership and Administration

Rector's WardenJim Lynes
People's WardenDenis Martel
Deputy WardensDebora Fleming
Charles Nixon
Parish AdministratorCatherine James-McGuinty
Communications Chair *Seeking*
Nominating ChairHelen Griffin
Property Co-ChairsBill Nuttle
Bill Cornfield
Stewardship OfficerJanice Sonnen
Members of SynodRandi Goddard
Charles Nixon
Aicha Ducharme-LeBlanc
Lisa Sheehy

Finance and Accounting

Finance/Stewardship ChairPaul Wefers Bettink
TreasurerKathy Laffin
Fundraising ChairPeggy Nankivell
CountersMichael Goddard
Contributions CoordinatorBrian Effer

Worship and Music

Director of Music and OrganistDr. Robert Hall
Altar GuildElizabeth MacMillan
Robina Bulleid
Servers' GuildCathy Simons
SidespersonsPeter Frayne
Worship CommitteeThe Reverend Geoffrey Chapman

Nurturing and Fellowship

Coordinator of Children and Youth Ministry..... Roland Kuehn
Christian Education and Formation Helen Griffin
Community Chair Margaret Terrett
Coffee HourJane and Peter Rider
Prayer Support TeamCatherine Thurlow
Prayer ChainJanice Sonnen
Open DoorsJane Oulton
Pastoral CareMollie Stokes

Outreach

Outreach ChairBernard Li
CCSAC Emergency Food CentreElizabeth Kent
Cornerstone Meal-a-Month Program*Seeking*
Harmony HouseCatherine James-McGuinty
Marmalade TeamPeter Rider
Out of the Cold SupperAnita Biguzs
FACES Refugee CommitteeTom Martin

Pulse of the Parish, the community newsletter of St. Matthew's Anglican Church, is published four times a year. The dates for publication in 2023 are as follows: March 24 (submissions by March 17), June 9 (submissions by June 2), September 22 (submissions by September 8) and December 1 (submissions by November 24).

Please forward contributions of up to 600 words and photographs by these due dates to Val Needham, Editor:
needhav@algonquincollege.com.

Together, we celebrate all that we do at St. Matthew's to the glory of God and in loving service of our neighbours.



The Anglican Church of Canada

Website: www.stmatthewsottawa.ca/
217 First Avenue, Ottawa, ON, K1S2G5

Office email: admin@stmatthewsottawa.ca
Office: 613.234.4024